



Your technology  
blueprint partner  
driving strategy, vision  
and success





Flexible & Scalable AI Enabled Project Management Platform

## Industry Challenges & Opportunity

Projects are becoming **more complex** due to extent of stakeholder engagement, scale, fast-track, multiple contracting options etc.

Legacy systems are **fragmented** and not integrated creating major challenges for real time insights. Off-the-shelf products are **high cost, high maintenance, non-integrated** with **no single source of truth**.

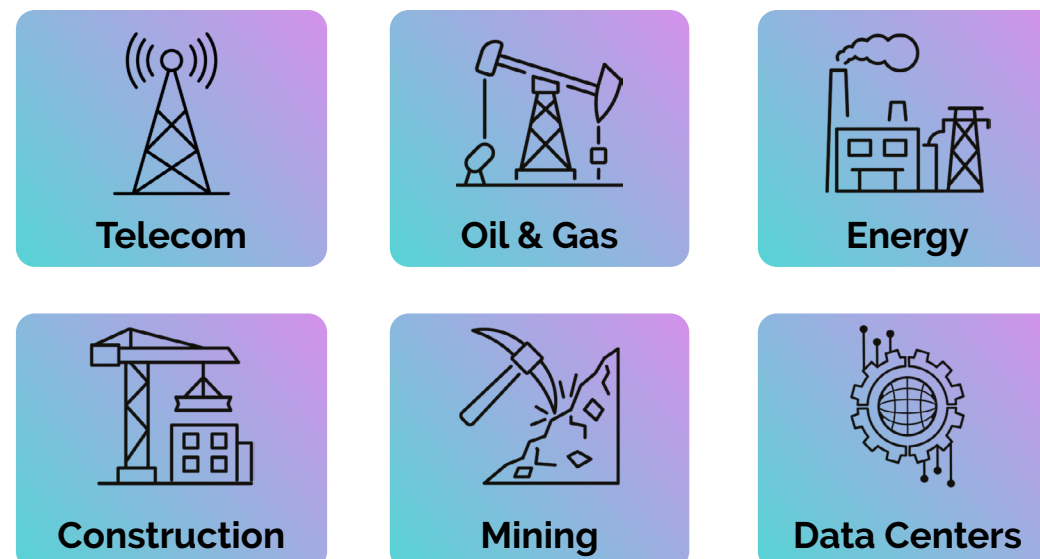
**iProMSys** addresses the **recurring demand** for a **flexible/scalable** bespoke **integrated platform** enabling **agility and cost savings, with informed predictability** based on a single source of truth.

**iProMSys** is a secure, cloud-based, and fully integrated project management platform that delivers real-time monitoring, insightful reporting, and centralized control of projects through a single, reliable source of truth.

## Who Is HiProServ®

**iProMSys®** is founded by seasoned industry executives with decades of global project delivery experience across multi-sector portfolios covering Engineering, Procurement, Construction & Commissioning (EPC), EPCM, PMC across various contract models.

A blend of project management & technology expertise providing a fully integrated digital solution for project delivery. Platform and modules can be used holistically or as individual modules.



## What Is iProMSys®

A truly integrated project management platform that's flexible, scalable and AI enabled that provides an "end-to-end" solution for all types of project delivery from initiation, planning, execution, monitoring & control to project close-out.

Designed with best-in-class architecture and technology, the production environment for the .NET web application is hosted on Microsoft Azure using a secure and segregated architecture.

The application is deployed on a Windows Virtual Machine with IIS, while the backend data is hosted on Azure SQL Database and accessed securely using Private Endpoints within a dedicated Virtual Network. Network Security Groups are implemented to restrict traffic, and Azure Bastion is used for secure administrative access without exposing virtual machines to the public internet.

## Key Features

### Modular & Scalable

Start with core functions and expand as your project needs evolve - with a flexible subscription model.

### Analytics-Ready

Built-in Excel report engines and Power BI integration delivers actionable business insights.

### Holistic or Modular

Use as a comprehensive solution or deploy modules independently based on your requirements.

### User-Centric

Designed for intuitive use across executive, managerial, and on-ground project teams

### Reports

Dashboards, KPI reporting with export functionalities.

### Project Repository

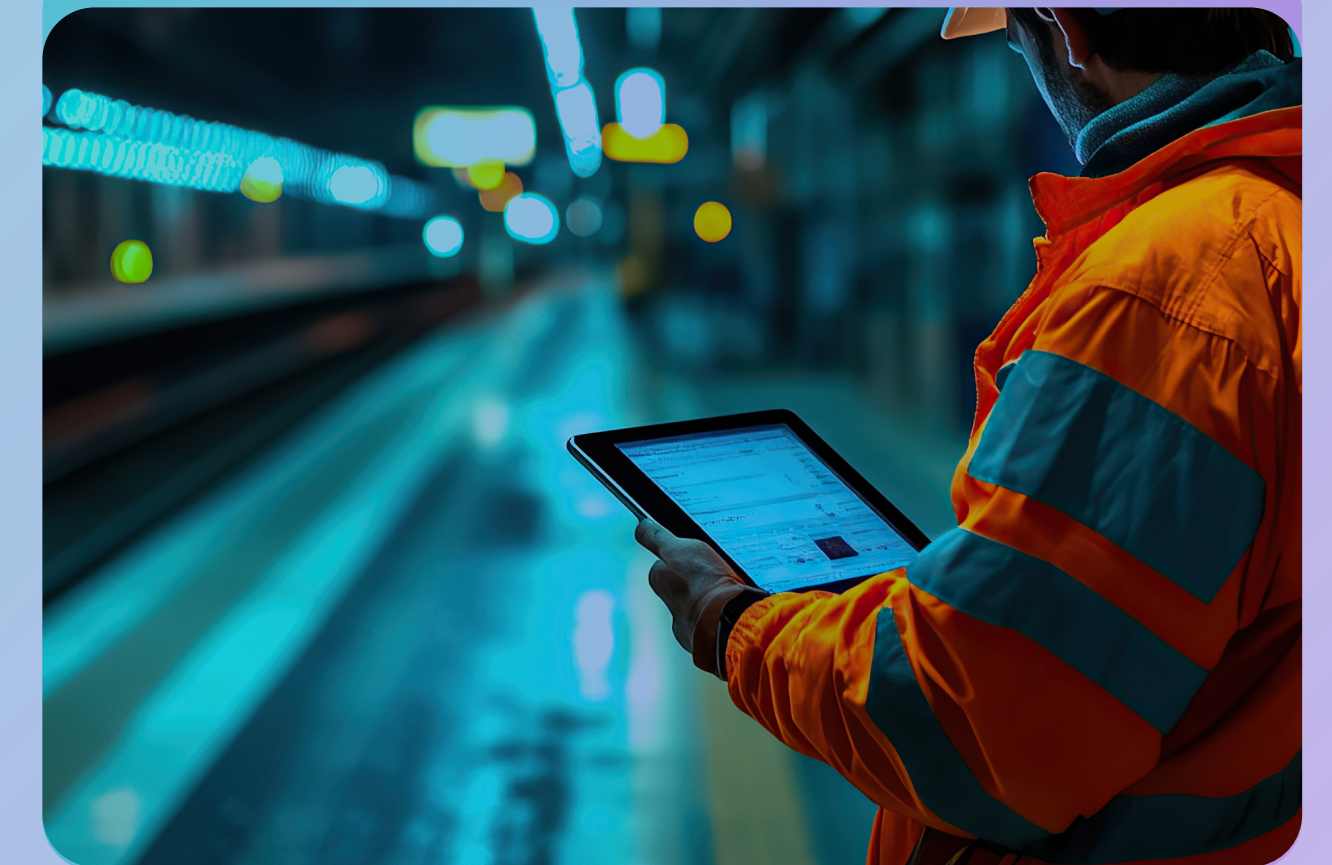
Consolidated project repository and full revision history.

## Strengths

iProMSys® is built on a robust, modern application framework and integrated with best-in-class digital technologies to ensure:

- High security
- Flexibility and adaptability
- Scalability for growing demands
- Unified, seamless interfaces
- A simple yet effective user experience (UI/UX)

## Integrations & Compatibility



### Platform

Latest development platform for easy UI/UX & smart reporting (MS SQL, .Net Core, HTML5).

### Media Enabled

Built in media (document, photo, audio, video) capture feature.

### Access Control

Define secure access levels to ensure confidentiality and data integrity.

### AI Agent

Embedded Agent for user set-up, FAQ, contract synopsis, predict outcomes based on pattern recognition and offer actionable insights.

### Seamless Integrations

Easily integrates with third-party systems to fit into your existing ecosystem like Oracle Fusion, SAP, Epicor, Salesforce etc. Seamless integration with Primavera P6 Cloud planning & scheduling software.

# Core Applications

## Project Management

- Portfolio & Projects Dashboards
- Work Breakdown Structure (WBS)
- Schedule Management
- Project Reviews
- Contract Synopsis

## Subcontracts

- Subcontract Register
- Subcontracts Management
- Progress Completion Certificate
- Subcontract Invoicing & Payments

## Deliverables & Progress Management

- Integrated Engineering
- Deliverables Register
- Rules of Credit
- Resources & Workshare
- Progress Tracking & Timesheets
- Earned-Value Management

## Cost Management

- Multi-level Cost Codes
- Budget Tracking
- Cost & Revenue Capture
- Cost & Revenue Forecasting
- Change Management
- AP, AR & Accruals

## Procurement & Inventory

- Procurement Register
- Material Catalogues
- Material Requisition
- Bid Evaluation
- Post-PO Tracking
- Multi-store Inventory

## Construction, Commissioning & Handover

- Construction Register
- Systemization
- Inspections / ITRs
- Completions & Turnover
- Preservation

# Supporting Applications

## Personnel Management

- Assigns and Tracks Project Personnel
- Resource Allocation & PAF's
- Timesheets
- Multi-office Workshare
- Utilization
- Mobilization and Demobilization process

## Assurance & Governance

- Peer Review
- QHSE Management
- Risk Management
- Interface Management

## Asset Management

- Asset Register
- Asset Movement
- Spares Inventory
- Maintenance



Your technology blueprint partner driving strategy, vision and success

[connect@hiproserv.com](mailto:connect@hiproserv.com)

[www.hiproserv.com](http://www.hiproserv.com)

