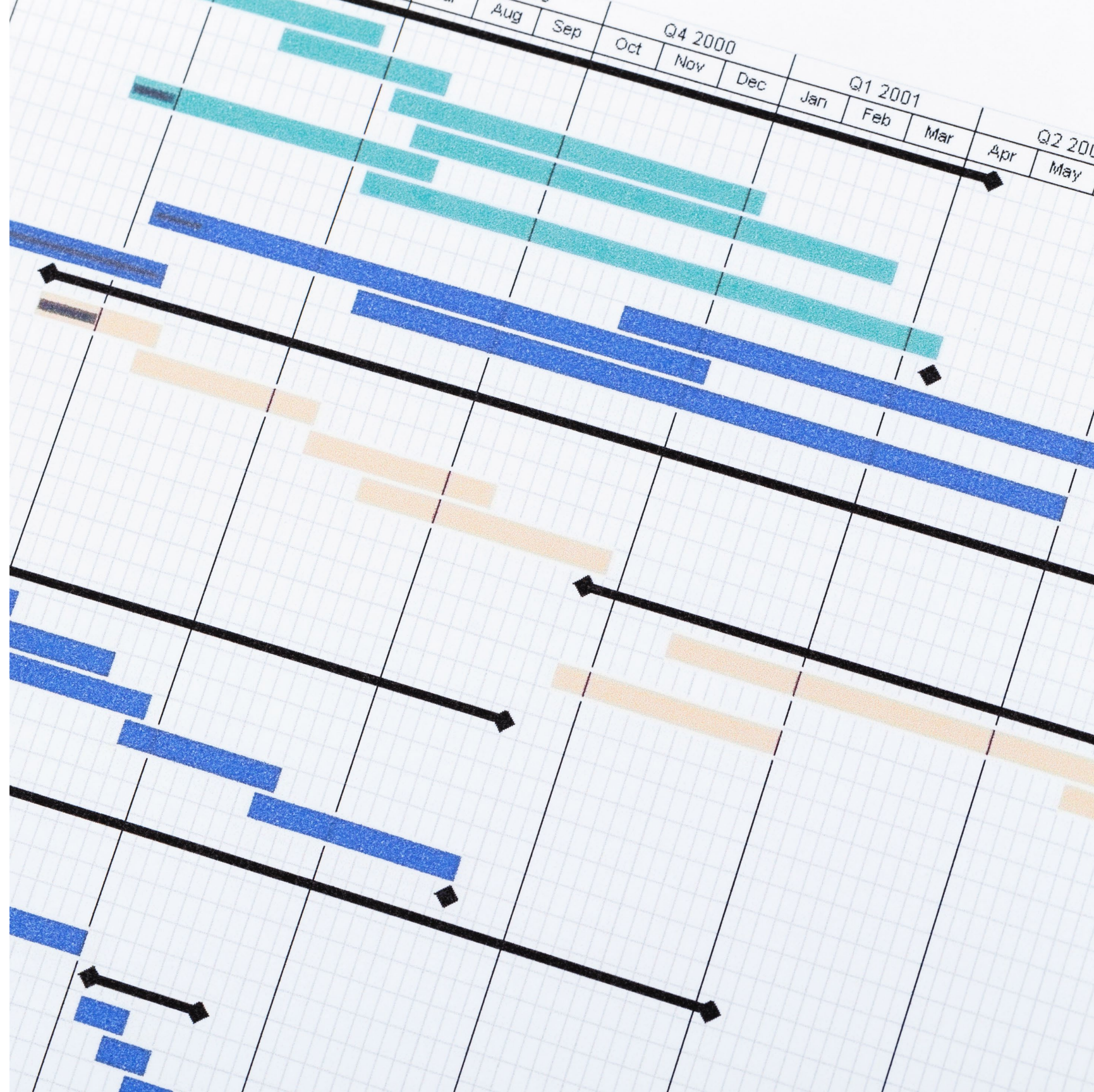




Our flagship product offering iProMSys® is a flexible and scalable cloud-based project management platform

It seamlessly integrates with your project data to allow your teams take timely informed decisions to bring your project to a safe, successful and timely completion.



iProMSys® is a flexible and scalable cloud-based integrated project management platform

Supports, monitors, and reports your day-to-day business transactions seamlessly with business analytics, using a single source of truth (data).

The system operates on a set of core applications for capturing key project management data across various project phases, supplemented by supporting applications that capture additional functional elements.

A flexible subscription-based model allows our clients to start with their initial requirements and later extend the subscription to encompass the overall integrated project management platform.

- Simple & effective user experience
- Use holistically or as individual modules
- Excel report engine and Power-BI analytics
- Seamless interface with industry standard API's

FULLY COMPATIBLE WITH

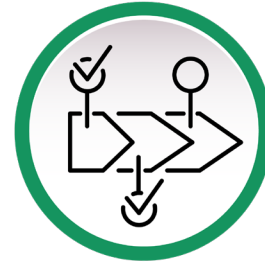


END-TO-END PROJECT MANAGEMENT



PROJECT MANAGEMENT & ENGINEERING

- Rules of Credit
- Resources & Workshare
- Progress & Timesheets
- Productivity



PROCUREMENT & INVENTORY

- Material Catalogues
- Bid Evaluation
- Post-PO Tracking
- Multi-store Inventory



COST MANAGEMENT

- Multi-level Cost Codes
- Budget Tracking
- Cost Forecasting
- Change Management



CONSTRUCTION, COMMISSIONING & HANDOVER

- Systemization
- Inspections
- Turnover
- Preservation



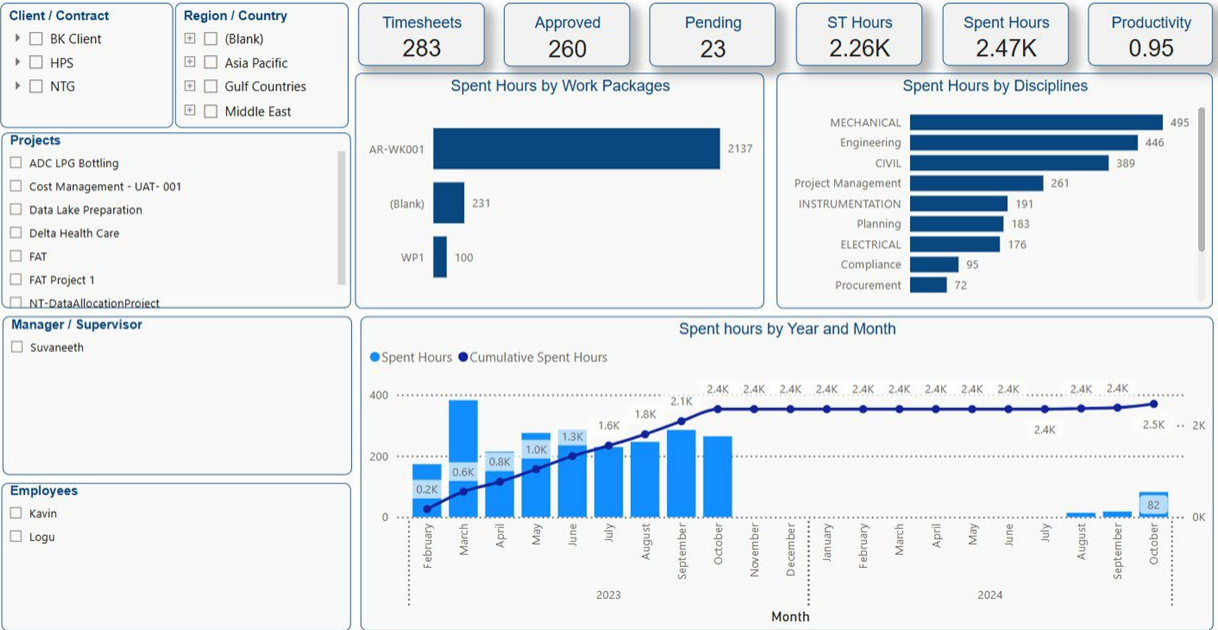
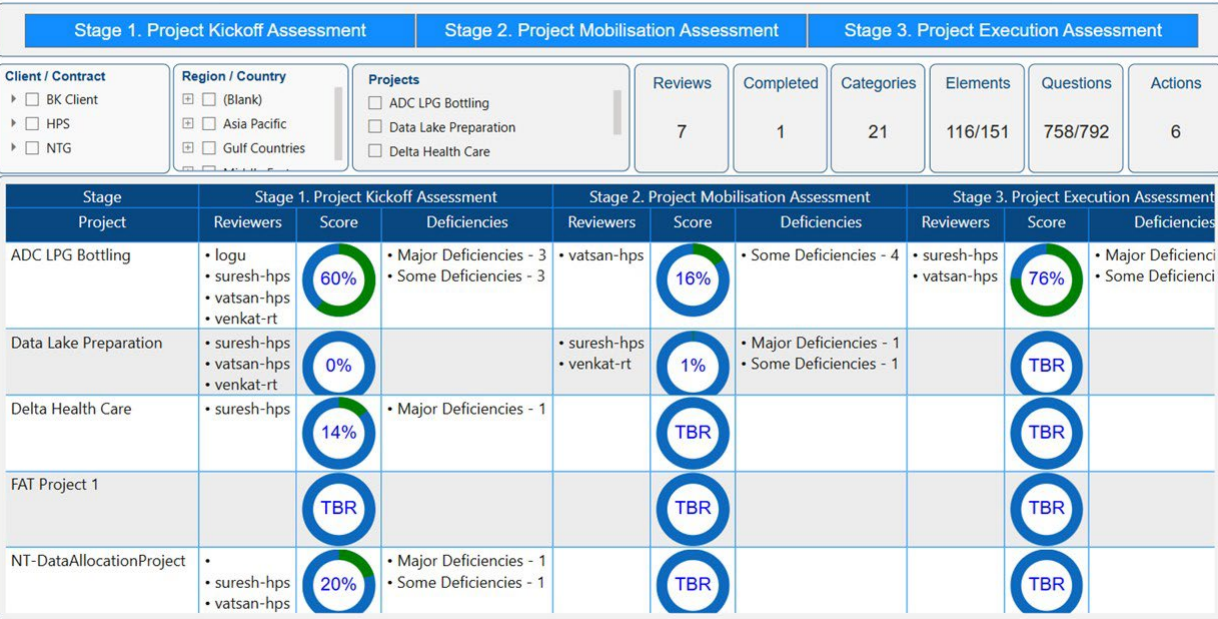
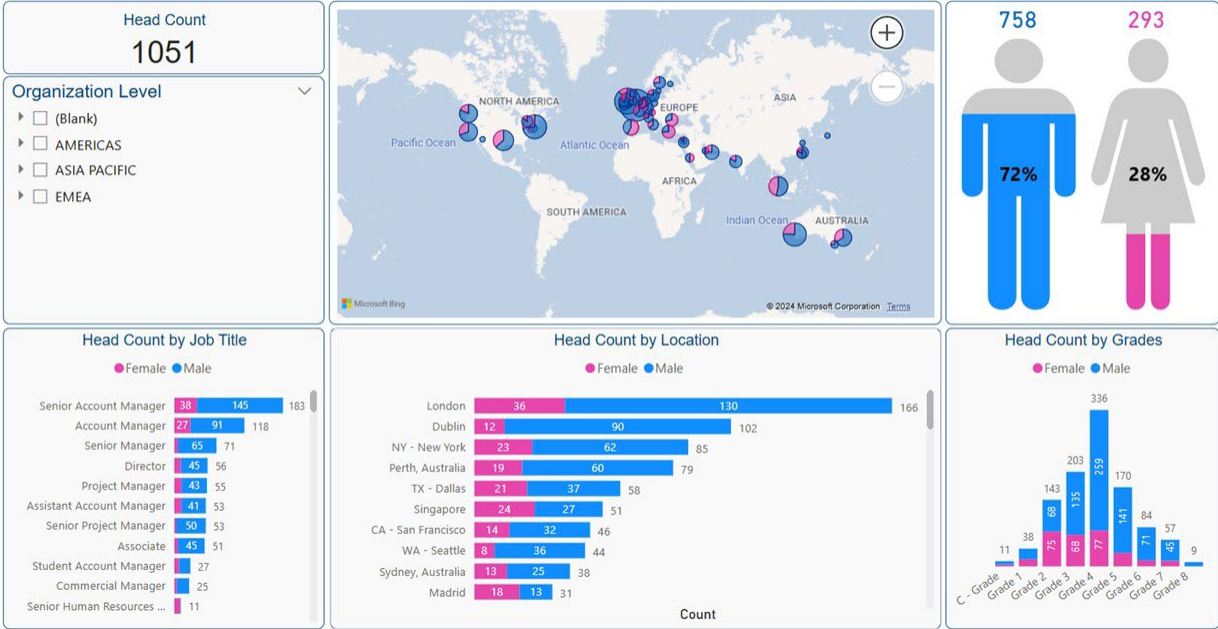
ASSET MANAGEMENT

- Scheduling
- Spares Inventory
- Asset Tracking
- Maintenance



ASSURANCE & GOVERNANCE

- Peer Review
- Quality & HSE
- Interface & Risk
- Document Control





Core applications for
day-to-day project
management

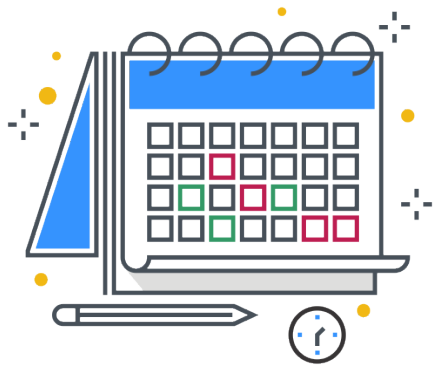




Deliverables & Progress Management

Tracks project deliverables centrally, linking to timesheets for productivity and earned value management reporting.

- Central repository of Engineering / Technical & Non-technical deliverables per project
- Flexible rules of credit for milestones and/or progress assigned for deliverables
- Project deliverables can be allocated across workshare environments
- Planning tool interface (plan, actual and forecast dates)
- Deliverables progress tracker
- Fully integrated with the Timesheet Module to track spent man-hours per deliverable
- Flexible business analytics providing S-curves, earned value & productivity reporting
- Seamless interface with Primavera P6 for hammock task roll-up or drill down



Timesheet Management

Tracks and allocates personnel time across projects, linking with Personnel and Deliverables Management, while accounting for time zones, working hours and vacation.

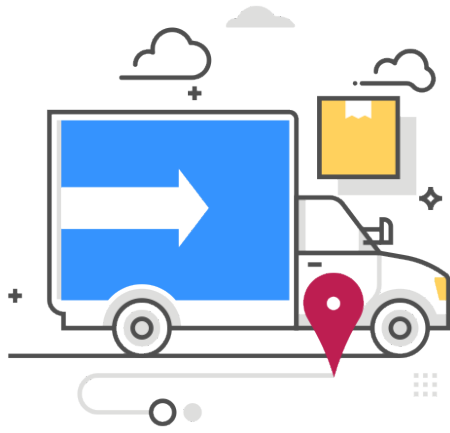
- Central repository for all Company spent man-hours per office, portfolio, project, work package and down to deliverable
- Flexible time-zone / work week definitions across multi-office workshare environment
- Configurable hours (standard / overtime etc per location)
- Fully integrated with the Deliverables and Progress Measurement Module to track spent man-hours and to provide the input for productivity analysis
- Integrated with Personnel Management Module for PAF
- Flexible business analytics providing spent man-hour reports



Cost Management

Tracks project budgets, forecasts and cost allocation with a flexible cost breakdown structure, supporting earned budget management.

- Central repository for all Company cost management per portfolio, contract or project
- Built-in commercial data confidentiality based upon department and user hierarchy / designation
- Organization or project cost codes
- Tender / Original project budgets
- Disciplined budget revision management
- Cost & revenue capture with accruals
- Earned budget
- Cost forecasting
- Scope changes / variations
- Accounts payable & receivables
- Seamless 3rd party interface with ERP systems



Procurement & Inventory

Manages procurement activities across the project life-cycle, tracking material flow and integrating with vendor & multi-store inventory management.

- Central repository for the life cycle of all items (equipment, materials, consumables etc) from material take off (MTO) through purchasing to site inventory management
- Purchased items tracked from portfolio, project, work package to site location deployment
- Central material or project specific catalogue
- Material and non-material requisitions (MR & NMR's)
- Built-in flexible inspection requirement sheets (IRS)
- Requests for quotation (RFQ) with bid tabulations
- Built-in commercial data confidentiality based upon department and user hierarchy / designation
- Material receipts & returns
- Site materials receipt, issues & returns
- Multi-store stock registers



Construction, Commissioning & Handover

Tracks systemization and construction progress with a turnover framework, integrating commissioning for a safe and structured handover.

- Central repository for all Projects construction, commissioning & handover
- Multi Disciplines Tag Register
- System / Sub-system definitions
- Handover / Turnover Framework
- Inspection Test Reports (ITRs)
- Punch List Management (Category A,B & C)
- Technical Queries
- Stage wise progress
- Crew Spent hours
- Productivity Report
- Preservation framework



Supplementary project management functions & overview





PERSONNEL MANAGEMENT & PAFs

Assigns and tracks project personnel for mobilisation, allocation, utilisation and demobilisation across multiple projects.



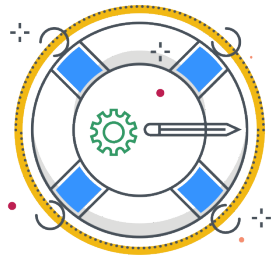
DOCUMENT MANAGEMENT

Tracks and controls project documentation with workflows for status updates and secure access.



QHSE MANAGEMENT

Monitors and reports quality, health, safety, and environmental metrics, with timely corrective actions.



RISK MANAGEMENT

Identifies, categorizes and tracks project risks across quality, cost, and schedule through a flexible matrix for mitigation.



INTERFACE MANAGEMENT

Captures and manages all project interfaces, ensuring effective coordination with internal and external stakeholders.



PEER REVIEW

Provides a platform for comprehensive project health checks through multiple stages of projects.



A diverse team with a
unique blend of project
management and
technology experience

HEADQUARTER – UAE

Office 2201, Burlington Tower,
Business Bay, Dubai,
Contact: connect@hiproserv.com

INDIA OFFICE

1001, Bluebell,
Everest World, Kolshet Rd.,
Thane (West)
Contact: connect.india@hiproserv.com

We also work with extended teams in UK and Australia. Coming soon to
Abu Dhabi.

www.hiproserv.com

